



Embrace new limits

SILVER ENDEAVOUR



Heralding a bold new era in
ultra-luxury expedition cruising,
Silver Endeavour explores the
extreme and farthest reaches of
Earth in extraordinary comfort.



Embrace new limits

Embodying our vision of modern, ultra-luxury expedition cruising, *Silver Endeavour* debuts as the world's most luxurious expedition ship. Her superior ice-class capabilities, coupled with cutting-edge navigation technology enable unparalleled access to some of the farthest reaches of Earth while her unrivalled exploration equipment allows for immersive and personalised discovery while ashore. Superb design, industry-high space and service ratios, and expansive suites complete the experience ensuring you travel in ultimate comfort, space, and luxury.





Superior Suites

Sumptuous luxury following extreme discovery.

Dispelling the notion that supreme luxury and intrepid adventure are mutually exclusive, the suites aboard *Silver Endeavour* elevate your expedition experience into the sublime. Indeed, the beautifully designed all-suite accommodation are amongst the most spacious in expedition cruising, ranging in size from 33m² (357ft²) to 174m² (1868ft²).

feature a spacious private balcony and floor-to-ceiling glass windows for an unobstructed connection with each destination. Sophisticated interiors are well appointed with all the amenities needed for expedition cruising as well as a bevy of indulgent luxuries to create an elegant retreat following extraordinary adventures ashore.

Offered in seven categories and spread across four public decks, all 100 suites

FEATURES AND AMENITIES FOR ALL SUITES

- Butler service
- Refrigerator and bar setup stocked with your preferences
- Plush bathrobes
- Pillow menu
- Luxury bath amenities
- Complimentary Wi-Fi
- Personalised stationery
- Umbrella
- Hair dryer
- Direct-dial telephone(s)
- Dual voltage 110/220 outlets
- Champagne on arrival



Owner's Suite

An iconic symbol of luxury as the ship's most spacious suite with a surrounding balcony (also the largest on board), the Owner's Suite offers an exceptional destination experience. Its premium bow location affords exceptional views from all vantage points within the suite.

Clockwise (from top): Spacious living room with separate dining and seating area including a bespoke bar area

The main bathroom features a spacious bathroom with double vanity, large whirlpool and walk-in shower.

The main bedroom is spacious and well appointed, featuring a large walk-in closet.



Grand Suite

Enviably situated at the ship's bow, the Grand Suite is one of the most luxurious and spacious aboard *Silver Endeavour*. Sweeping views enjoyed from a large balcony reveal the grandeur of remote destinations. A smaller bedroom is able to accommodate a third berth.

Clockwise (from top): Spacious living room featuring a luxurious vanity and separate dining area

Floor-to-ceiling glass doors and windows ensure views from all living areas

Spacious bathroom with double vanity, large whirlpool and walk-in shower



Silver Suite

An all-time guest favourite, the popular Silver Suite is well represented aboard *Silver Endeavour*. The spacious interior features inviting spaces for entertaining, and stunning destination views are enjoyed via the floor-to-ceiling windows and large balcony.

Clockwise (from top left): Spacious bedroom area with king-sized bed and large flat-screen TV

Large bathroom with sumptuous walk-in shower and large vanity

Separate living and dining area with bespoke mini bar and luxury vanity



Veranda Suite

Available as Classic, Superior, Deluxe or Premium, our iconic Veranda Suite is elevated to even more luxurious beauty aboard *Silver Endeavour* yet preserves the iconic configuration that made it an industry game-changer. The private balcony affords excellent views and an intimate connection with each destination.

Clockwise (from top left): View of the bedroom from the seating area

Bathroom with double faucets on large vanity and separate shower

Sleeping area with custom-made luxury bed mattress and incredible views of the destination



ARCTIC AND
GREENLAND

NORTHERN EUROPE
AND BRITISH ISLES

ANTARCTICA

Embrace new limits of discovery

*Unprecedented luxury
in even more remote and
extreme destinations*

Silver Endeavour invites you to embrace new limits... to discover the wilderness and wonder of far away polar regions few have ever seen, and to do so in unrivalled comfort and luxury. By deliberate design, the technology and amenities on this extraordinary vessel afford opportunities for uncommon access and intimate exploration of grand glaciers, majestic fjords, soaring icebergs, and fascinating wildlife, both on board and ashore.

[Download *Silver Endeavour's* voyages here](#)



ANTARCTICA

***Explore the last
continent in ultimate
luxury***

Few adventures are able to ignite the imagination as much as an expedition to the vast White Continent and the wildly remote islands that dot the Southern Ocean. From the Antarctic Peninsula and the South Shetland Islands to South Georgia and the Falkland Islands, this extreme wilderness enchants with majestic beauty.

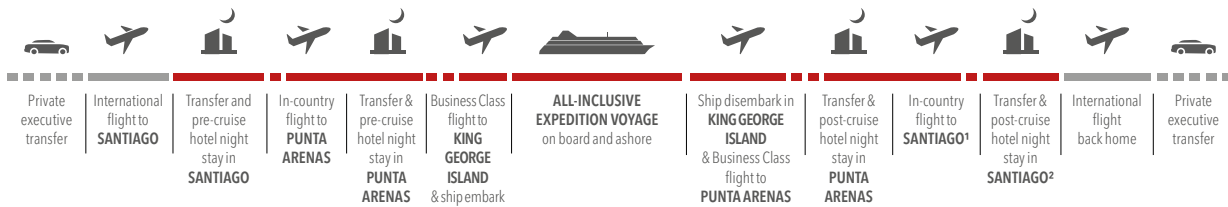
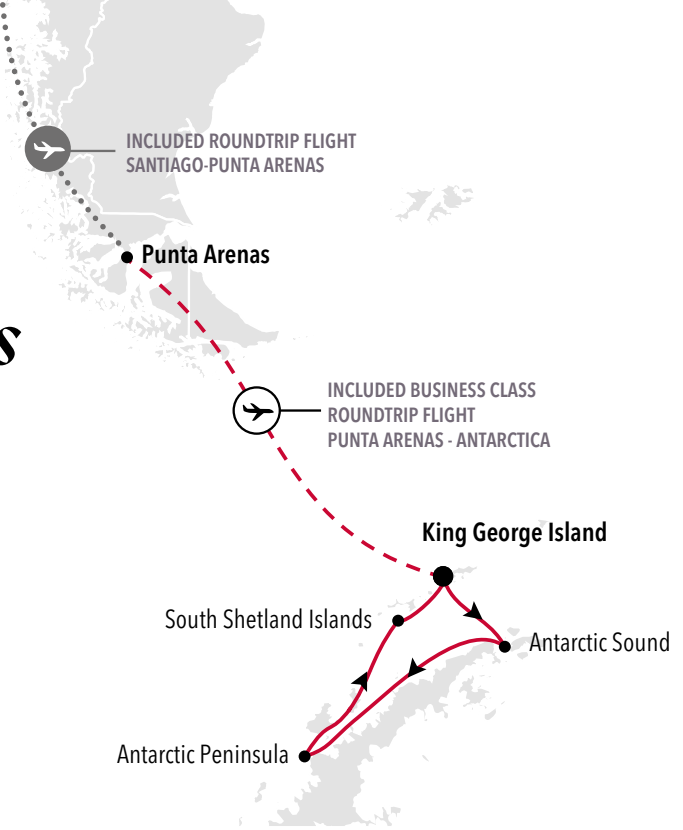
Explore the unspoiled shores of Antarctica and experience a breathtaking landscape packed with wildlife and adventure on board *Silver Endeavour*.

Join the ranks of the (very) well travelled and sail the fame Drake Passage en route to this fascinating destination, or choose

to skip the crossing and take a 2 hour flight directly into the heart of Antarctica in Silversea's hallmark ultra luxury style. By day you'll be sipping champagne in the stunning scenery, whilst by night , you'll be dining on caviar aboard one of the most luxurious expedition ships ever built. If you share our passion for deeply immersive travel then join us during *Silver Endeavour's* inaugural season and enjoy endless possibilities both on board and on land as we explore the White Continent in supreme luxury.



Silver Endeavour's Inaugural sailing



¹ Arrival time set for late afternoon
² For guests whose flights require an overnight stay

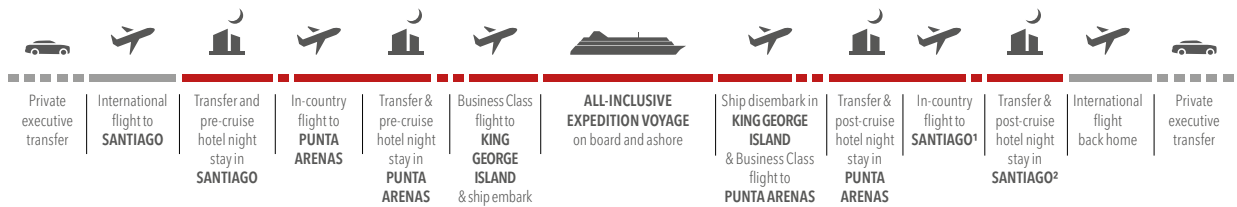
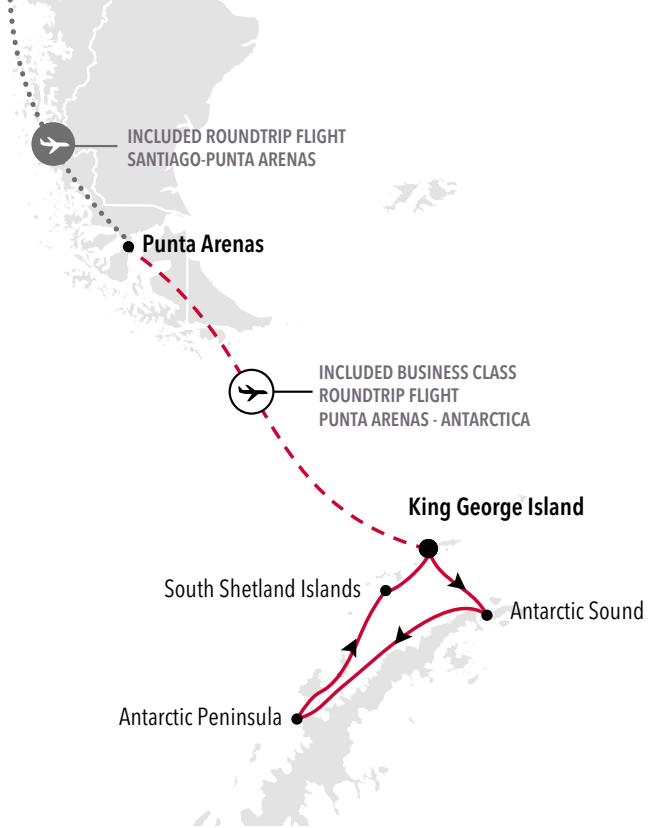
Where better than the last continent for *Silver Endeavour* to make her grand debut? Join our privileged group of guest pioneers aboard *Silver Endeavour's* maiden voyage in Antarctica. Skip the Drake Passage to fly in business class comfort from Punta Arenas straight to King George Island, South Shetland Islands. From there, let *Silver Endeavour* immerse you in the otherworldly beauty of the most extreme latitudes on the planet.

21 to 28 NOVEMBER 2022
 KING GEORGE ISLAND
 ROUNDTRIP

7 DAYS



Antarctica Bridge



¹ Arrival time set for late afternoon
² For guests whose flights require an overnight stay

3 to 9 DECEMBER 2022
 KING GEORGE ISLAND ROUNDTRIP

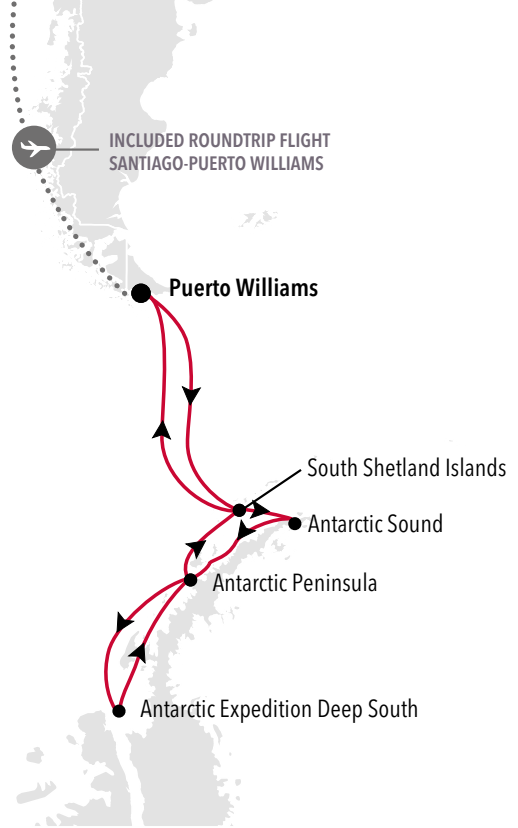
6 DAYS

Antarctica has long held travellers captive, yet the thrill of the Drake Passage is not for everyone. Our Antarctica Bridge sailings offer a fast-track solution to the last continent. Board a charter flight in Punta Arenas and in just two hours you could be boarding *Silver Endeavour* in the snowy South Shetland Isles for the ultimate expedition of the last continent.



This is a sample voyage. Longer (9 days) and shorter (5 days) options are also available.

Antarctica Deep South expedition

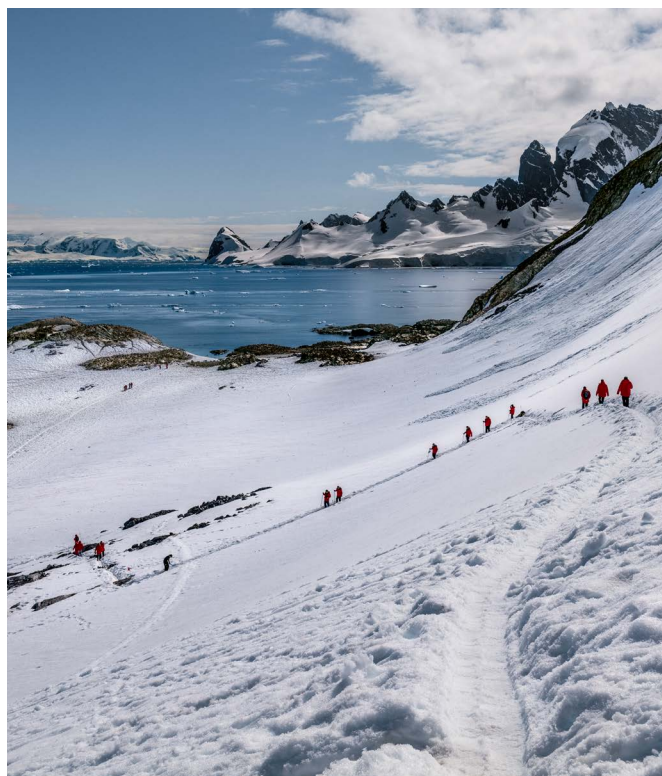


¹ Arrival time set for late afternoon
² For guests whose flights require an overnight stay

12 FEBRUARY to 04 MARCH 2023
PUERTO WILLIAMS ROUNDTRIP

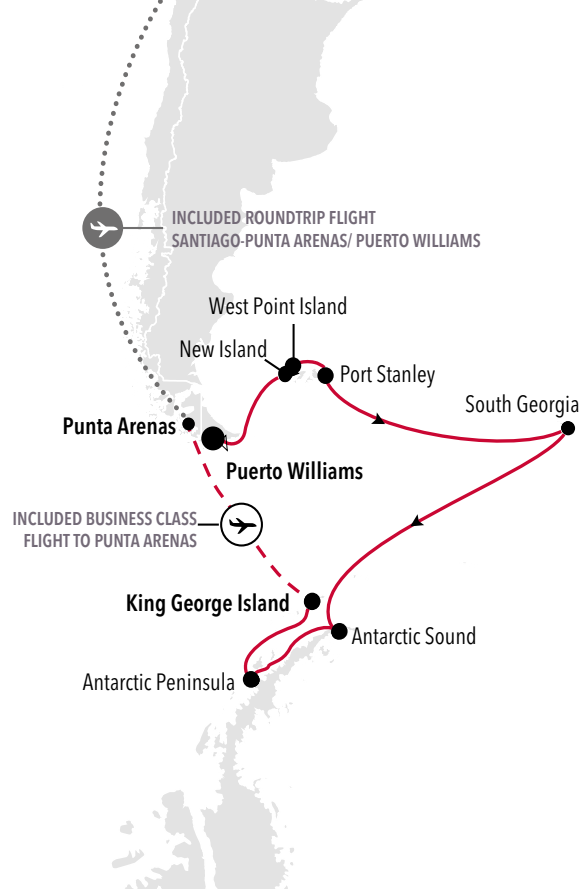
20 DAYS

Join the ranks of Amundsen, Shackleton and Fiennes and become one of the world's most well-travelled people. Not only will you step foot on the most mysterious and enigmatic continent in the world, but you will travel to parts of Antarctica rarely seen by man. Accompanied by your team of experts, this 20-day Deep South Expedition will take you into rarely visited territory and will reinvent your idea of travel.



This is a sample voyage. Other shorter voyage options are also available.

15-day Antarctica, South Georgia and Falkland Islands expedition



¹ | Arrival time set for late afternoon
² | For guests whose flights require an overnight stay

12 to 27 FEBRUARY 2023
PUERTO WILLIAMS to KING GEORGE ISLAND

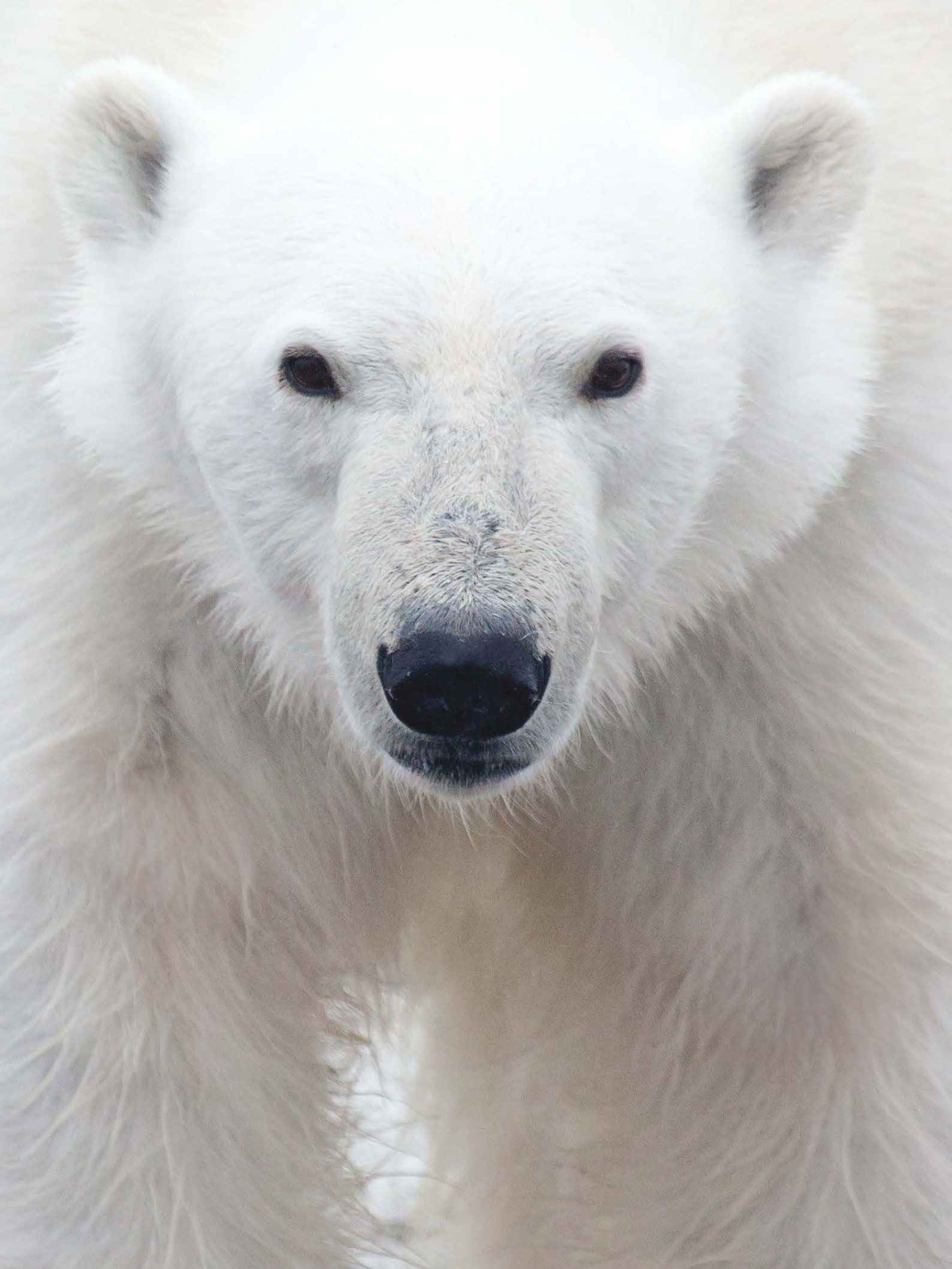
15 DAYS

Embark on an epic Antarctica voyage which includes all of the highlights you can imagine: from the Falkland Islands to South Georgia to the Antarctic Peninsula, you will have countless unforgettable moments on this adventure packed, 15-day voyage. You'll experience rewarding shore visits and Zodiac cruises, marvel at intimate wildlife encounters, explore historic sites and make the most of your visit to the 7th Continent. At the end of your expedition, skip the notorious Drake Passage and fly in ultimate comfort by charter plane.

This is a sample voyage. Other shorter and longer voyage options are also available.







ARCTIC, GREENLAND *and* CANADA

*Venture deep into the
far reaches of
the Arctic.*

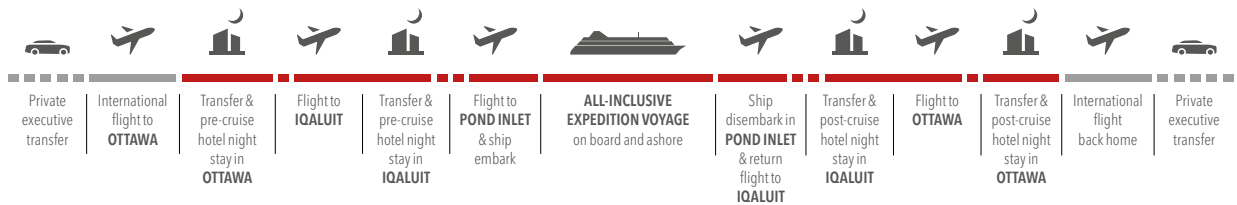
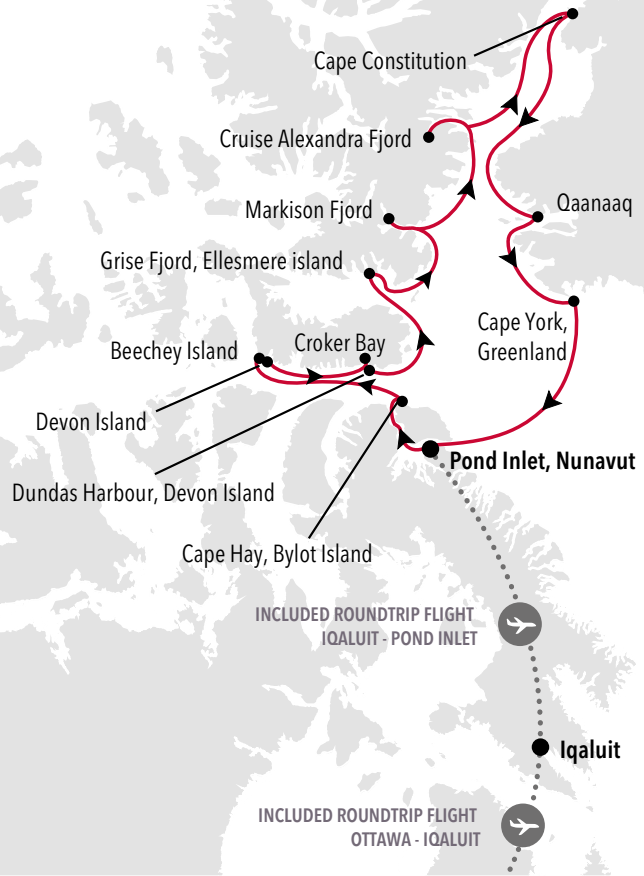
Welcome to one of the most remote places on Earth: a dramatic region of breathtaking scenery, frozen oceans and rugged features. Under the midnight sun, glide past ancient glaciers, diamond blue icebergs and snow capped mountains. Revel in the raw beauty of the Arctic landscapes and discover uncharted territories as *Silver Endeavour* ventures deeper than ever before, where very few have ever been.

Explore the rarely visited Canadian High Arctic or the remote shores of Greenland plus time honoured favourites to British Isles, Iceland and Svalbard, as *Silver Endeavour* unlocks a complete range of unique experiences to venture deeper than ever before into the far reaches of the Earth. Explore the hidden secrets of these regions with our top notch

Expedition Team, curated specifically for each itinerary, to include specialities ranging from: naturalists, biologists, geologists, historians and more.

Follow in the path of famed explorers who sought the Northwest Passage and Vikings who sailed to conquer new lands. Learn all about the history and archaeological remains of the lands we visit and get intimately familiar with the local communities. Or, go high, deep and far into the Canadian Arctic to spot the mythic species: muskoxen, numerous whales, polar bears, walrus and sea birds. Magical and unexpected, expect to be astonished by the very top of the world.

Canadian High Arctic expedition



10 to 20 SEPTEMBER 2023
POND INLET ROUNDTRIP

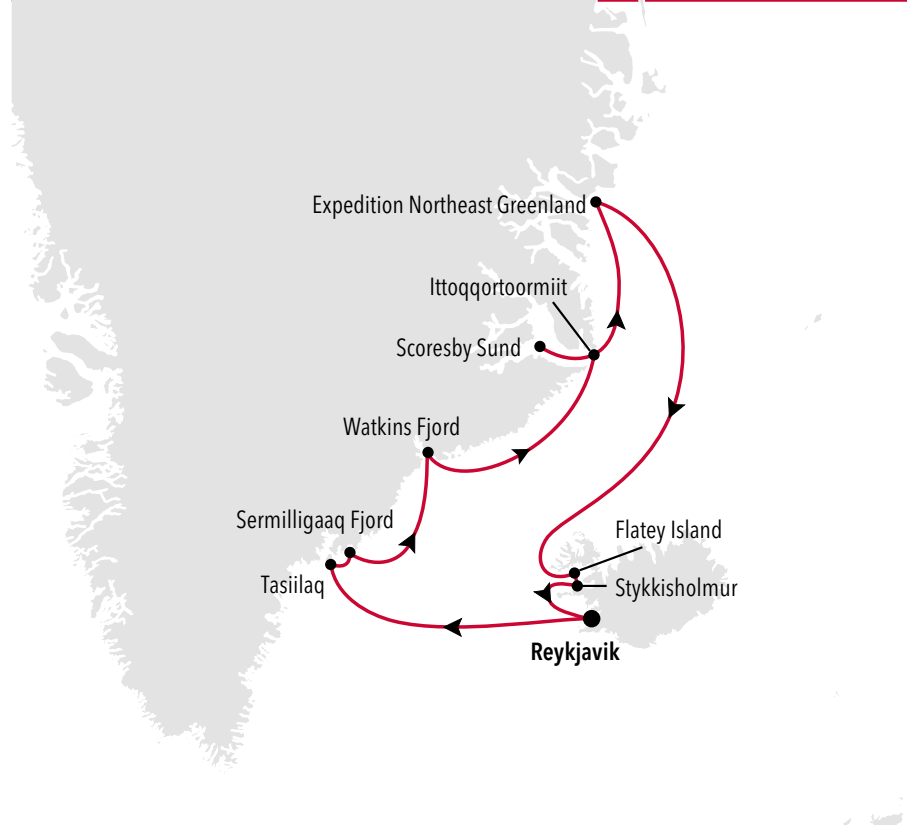
10 DAYS

Sail aboard our new luxury expedition ship, *Silver Endeavour*, with her ice strengthened hull, as she easily conquers the extremes of this vast frosted wilderness. Explore the eastern entrance of Canada's fabled Northwest Passage, following in the footsteps of world famous explorers; encounter some of the most isolated Inuit communities and learn all about Thule ancient history at Pond Inlet and Devon Island.



This is a sample voyage. Other voyage options exploring the Arctic, Greenland and Canada are also available.

North-East Greenland expedition



5 to 21 SEPTEMBER 2023
REYKJAVIK ROUNDTRIP

16 DAYS

Join us on this unforgettable journey to explore one of the last stretches of unspoiled wilderness on the planet, under the multi coloured hues of the Northern Lights. Depart Iceland's coastal capital and venture all the way north to Northeast Greenland National Park in search of the Arctic's iconic wildlife polar bears, whales, muskoxen, and more. You'll be immersed in the untamed beauty of the Arctic, experience up close encounters with the wildlife and learn all about Inuit culture and Thule history.

This is a sample voyage. Other voyage options exploring the Arctic, Greenland and Canada are also available.



All-inclusive journey from door-to-door.

*pre&post
cruise benefits* Private executive transfers (between home and airport);
International roundtrip flights (or air credit)¹;
Business Class upgrades at reduced rates¹;
In-country flights, when required by itinerary;
Pre- and post-cruise hotel night/s, or day-use hotel²;
Transfers and luggage handling.

*activities & gear
exclusive to
EXPEDITIONS* Highly-qualified Expedition Team;
Enrichment lectures, guided Zodiac, land and sea tours, and shore-side activities;
Complimentary expedition gear including parka, backpack and water bottle.

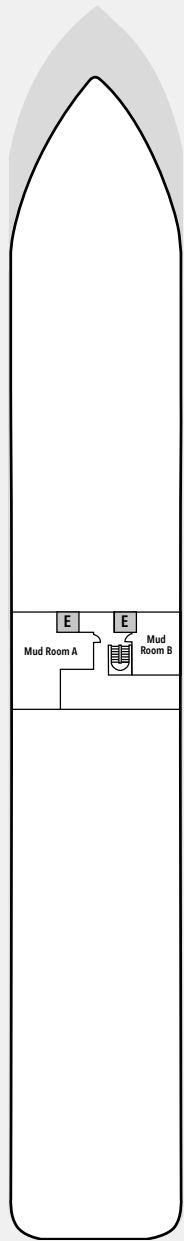
*fine dining
and beverages* Multiple restaurants serving diverse cuisine and an in-suite 24-hour dining
service including caviar;
Premium beverages in-suite and throughout the ship.

*personalised
service and
amenities* Butler service in every suite category;
Industry-leading crew-to-guest ratio;
Onboard gratuities;
Unlimited Wi-Fi.

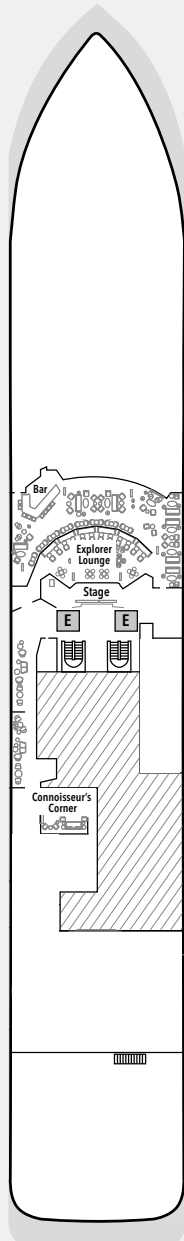
¹ Air is not available in all countries and to all destinations. Should the desired air not be available, a non-use credit will be offered and can be applied as extra saving to the cruise fare. Business Class upgrades are available in selected destinations. | ² Depending on Silversea's air programme flight schedule. | Find detailed information on www.silversea.com/terms-and-conditions



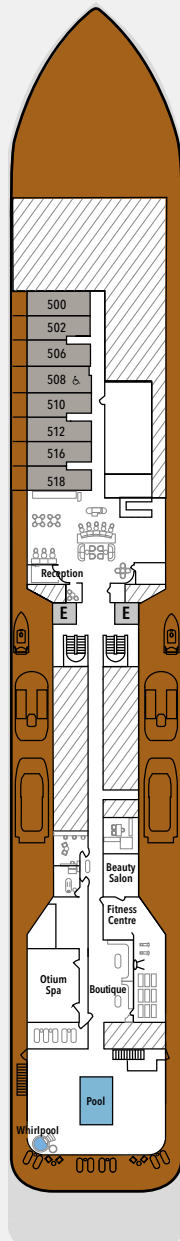
Silver Endeavour deck plans



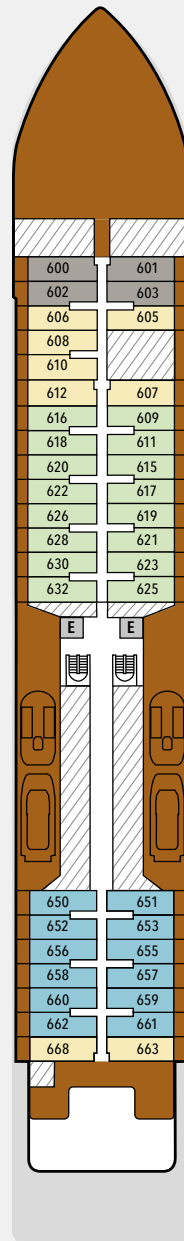
DECK 3
Mud Room



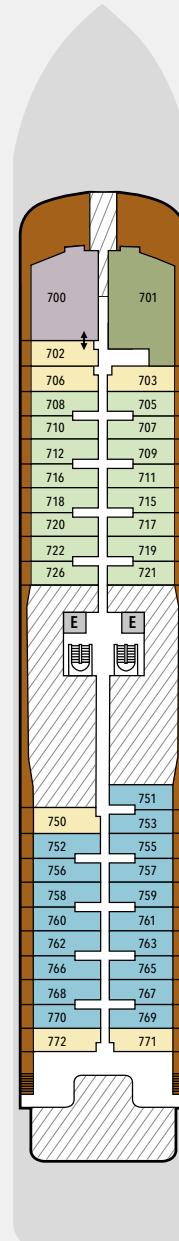
DECK 4
Explorer Lounge
Connoisseur's Corner



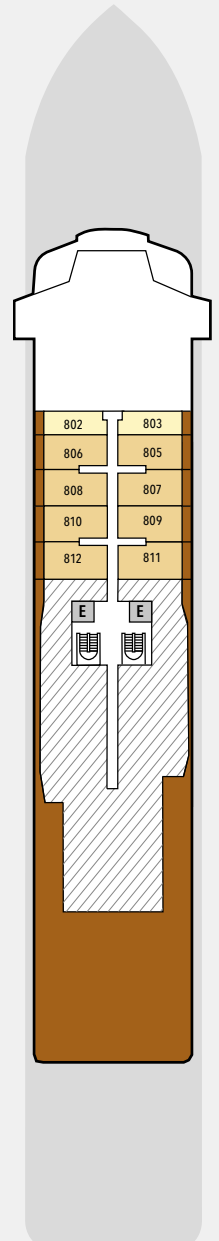
DECK 5
Reception
Beauty Salon
Fitness Centre
Otium Spa
Boutique
Pool Deck



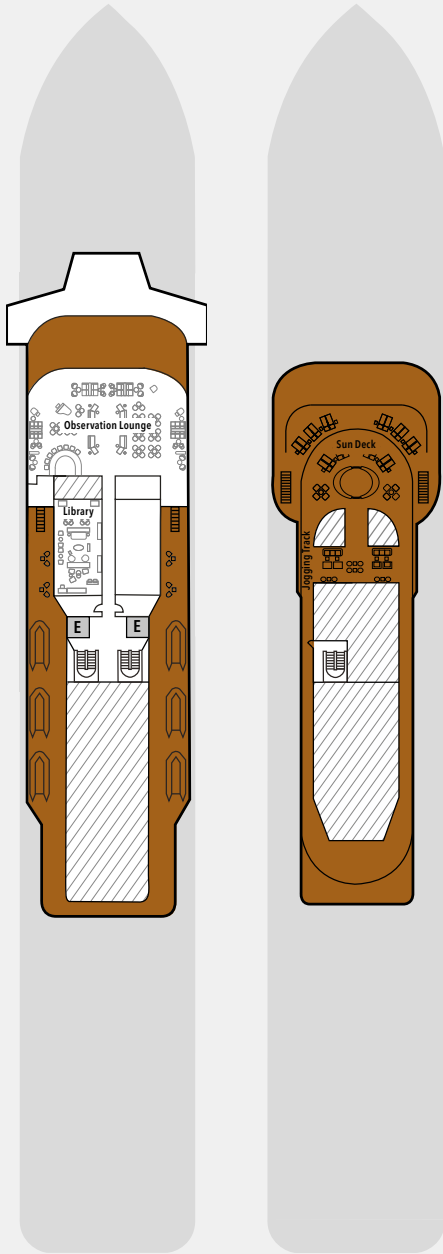
DECK 6
Whirlpool
The Bow



DECK 7
Suites



DECK 8
Suites



DECK 9
Observation Lounge
Library

DECK 10
Sun Deck

SPECIFICATIONS

IMO Polar Code rating	PC6
Crew	200
Officers	International
Guests	200
Tonnage	20,449
Length	539 Feet/ 164.40 Metres
Width	93 Feet/28.35 Metres
Speed	19 Knots
Passenger Decks	8
Disabled Suites	
Connecting suites	↑
Built	2021
Registry	Bahamas

SUITE CATEGORIES

- Owner's Suite
- Grand Suite
- Silver Suite
- Premium Veranda Suite
- Deluxe Veranda Suite
- Superior Veranda Suite
- Classic Veranda Suite

Deckplans are for illustration purposes only and may be subject to change.

Suite diagrams shown are for illustration purposes only and may vary from actual square footage. Please refer to suite specifications for square footage.

Silver Endeavour suites



Suite diagrams are for illustration purposes only.
Features, materials, finishes and layout may differ from shown and subject to change. Sizes are not to scale.

OWNER'S SUITE

Available as a two-bedroom configuration

ONE BEDROOM: 1868 SQ FT / 174 M2
INCLUDING VERANDA (737 SQ FT / 69 M2)

- Large veranda with patio furniture and floor-to-ceiling glass doors
- Living room with sitting area
- Separate dining area
- Main bedroom has a large walk-in wardrobe with personal safe and a bathroom with double vanity, walk-in shower and whirlpool bath
- Second bedroom has a separate wardrobe and a bathroom with walk-in shower
- Twin beds or king-sized bed in both bedrooms
- Writing desk(s)
- Custom-made bed mattresses
- Three large flat-screen TVs with Interactive Media Library
- Sound system with Bluetooth connectivity
- Espresso machine



GRAND SUITE

Available as a one-bedroom configuration or as a two-bedroom by adjoining with a Premium Veranda Suite

ONE BEDROOM: 1668 SQ FT / 155 M2
INCLUDING VERANDA (684 SQ FT / 64 M2)

TWO BEDROOM: 2025 SQ FT / 188 M2
INCLUDING VERANDA (69 SQ FT / 743 M2)

- Large veranda with patio furniture and floor-to-ceiling glass doors
- Living room with sitting area
- Separate dining area
- Bathroom with double vanity, walk-in shower and whirlpool bath
- Third guest can be accommodated in an additional single bed bedroom
- Twin beds or king-sized bed and a single bed in the additional bedroom
- Vanity table(s)
- Writing desk(s)
- Custom-made bed mattresses
- Three large flat-screen TVs with Interactive Media Library
- Sound system with Bluetooth connectivity
- Espresso machine



SILVER SUITE

Available as a one-bedroom configuration

ONE BEDROOM: 535 SQ FT / 50 M2 INCLUDING
VERANDA (78 SQ FT / 7 M2)

- Veranda with patio furniture and floor-to-ceiling glass doors
- Living room with convertible sofa to accommodate an additional guest
- Dining area
- Bathroom with double vanity and walk-in shower
- Twin beds or king-sized bed
- Vanity table(s)
- Writing desk(s)
- Custom-made bed mattresses
- Two large flat-screen TVs with Interactive Media Library
- Sound system with Bluetooth connectivity
- Wall mounted USB mobile device chargers
- Direct-dial telephone(s)
- Espresso machine



PREMIUM VERANDA / DELUXE VERANDA / SUPERIOR VERANDA / CLASSIC VERANDA

Available as a one-bedroom configuration.

356 SQ FT / 33 M2 INCLUDING VERANDA (52 SQ FT / 5 M2)

- Veranda with patio furniture and floor-to-ceiling glass doors
- Sitting area with convertible sofa to accommodate an additional guest
- Bathroom with double faucets on large vanity and walk-in shower
- Twin beds or king-sized bed
- Vanity table(s) / Writing desk(s)
- Custom-made bed mattresses
- Wheelchair accessible suite has a bathroom with vanity and shower
- One large flat-screen TVs with Interactive Media Library
- Wall mounted USB mobile device chargers
- Direct-dial telephone(s)
- One large flat-screen TVs with Interactive Media Library

All the images and renderings in this brochure are intended as a general reference. Ships features, materials, finishes and layout may differ from those shown in this brochure.

