



WE'RE PROUD TO BE ONE OF THE MOST AWARDED CRUISE LINES IN THE INDUSTRY



JOIN US FOR NIEUW STATENDAM'S INAUGURAL SEASON!

For more information, contact your Travel Professional, call 1-877-SAIL HAL (1-877-724-5425), or visit hollandamerica.com.



HAL16451US

Effective March 13, 2018



Holland America Line®
SAVOR THE JOURNEY



ARTFULLY INSPIRED

NIEUW STATENDAM

ARRIVING DECEMBER 2018

SHIP DETAILS

- 2,666 Guests
- 1,036 Crew
- 99,500 Gross Tons
- 975 Feet Long
- 13 Guest Decks
- 12 Restaurants and Cafés
- 7 Entertainment Venues
- 7 Lounges/Bars
- 3 Meeting Rooms
- Wraparound Promenade Deck
- 2 Outdoor Swimming Pools
- Spa & Salon
- Fitness Center
- Suite Lounge
- Duty-free Shops
- Library/Internet Café
- Onboard Wi-Fi Access
- Casino
- Sport Courts



Clockwise from left: *Nieuw Statendam*; couple enjoying coffee; artwork by Carlos Estevez; close-up of spices; artwork by Paul Niladri; Greenhouse Spa & Salon; Queen's Lounge

ARTFULLY INSPIRED

on board Nieuw Statendam, every detail is on display

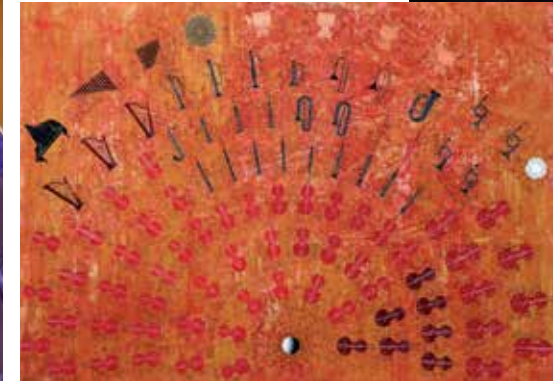
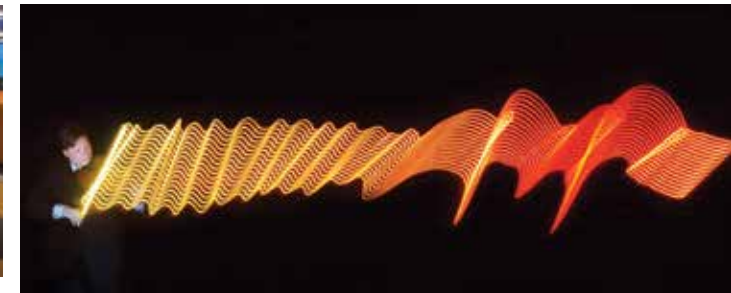
FROM FAMILIAR ELEMENTS that reflect our rich heritage and classic style to state-of-the-art enhancements that chart a bold new course forward, guests on board *Nieuw Statendam* will discover details that are artfully inspired and perfectly presented.

Whether it's a specially curated work of art, the arrival of an exquisite meal or the sophisticated surroundings in every stateroom, we've overlooked nothing to make *Nieuw Statendam* the ultimate Pinnacle-class experience. Because if the past 145 years have taught us anything, it's that the smallest details often make the biggest difference.

DISCOVER *awe-inspiring artwork and interiors*



NIEUW STATENDAM continues Holland America Line's tradition of showcasing world-class art on board. Her astounding \$4.1 million collection and her interior design elements inspire guests to discover the most abstract of all art forms – music itself. At every turn, guests will journey into the colorful world of musical performance, as pieces curated from artists around the globe invite them to experience the colors, movement and impact of sound.



Clockwise from left: Atrium; Crow's Nest; artwork by Stephen Orlando; artwork by Paul Niladri; artwork by Carlos Estevez

INTERIORS INFLUENCED BY MASTERS

- Interiors on board created by brilliant hospitality designer Adam D. Tihany and legendary ship architect Bjørn Storbraaten
- Featuring all the hallmarks of Pinnacle-class design: grand light-filled spaces, visual drama and sumptuous interiors inspired by the fluid curves of musical instruments
- Of particular note is the soaring central Atrium, whose design evokes the delicate strings of a harp

OUR MOST IMPRESSIVE COLLECTION YET

- Nearly 2,000 pieces procured exclusively for *Nieuw Statendam*
- Artworks valued from \$500 to \$600,000
- From photography and prints to sculpture and painting, guests will find a variety of art forms on board

EXPERIENCE

innovative dining

NIEUW STATENDAM offers an abundance of unforgettable dining options where every meal is a masterpiece. Guests will find a variety of venues to suit every mood, from perennial Holland America Line favorites to all-new experiences found only on *Nieuw Statendam*, such as alfresco dining in Tamarind.



This page: The Dining Room
Opposite page, clockwise from left: Tamarind dish and service; place setting, Pinnacle Grill; Canaletto



DINING DETAILS

FINE DINING

The Dining Room

For breakfast, lunch or an unforgettable dinner, the elegant Dining Room is your destination for sophisticated dining.

Pinnacle Grill*

Refined, luxurious and intimate, Pinnacle Grill represents the height of fine dining on board with dishes inspired by America's Pacific Northwest.

Canaletto*

This authentic Italian restaurant offers a menu of classic favorites like braised chicken cacciatore al forno, garlic shrimp ravioli and tiramisù.

Tamarind*

Tamarind offers exotic menus evoking the culinary traditions of Southeast Asia, China and Japan served indoors or alfresco.

Nami Sushi*

A new sushi bar created in partner with Culinary Council® member and sushi master Chef Andy Matsuda. Enjoy new signature rolls featuring king crab, spicy tuna, freshwater eel and yellowtail to name a few.

Rudi's Sel de Mer*

Rudi's Sel de Mer ("sea salt" in French) is an intimate seafood brasserie offering a contemporary twist on French seafood classics.

*A nominal fee is charged for lunch and/or dinner and à la carte pricing applies in Nami Sushi.

CASUAL DINING

Lido Market

A modern marketplace with different themed stations, Lido Market offers a curated selection of delicious options to grab on the go or to have quickly made to order.

Dive-In

For alfresco dining by the pool, Dive-In features a popular grilled burger on brioche and Nathan's Famous gourmet hot dogs.

New York Pizza & Deli

Enjoy authentic deli sandwiches piled high, delicious thin crust pizzas and creative salads, all served up poolside.

Grand Dutch Cafe

Inspired by our Dutch heritage and complemented with blue-and-white Delftware, the Grand Dutch Cafe is the perfect place to enjoy a fine pint of lager or your favorite coffee drink, along with a traditional savory Dutch snack.

G Gelato

Enjoy this classic European dessert on *Nieuw Statendam*, made fresh on board in a variety of delicious flavors and styles.

24-hour In-Room Dining

Sleep in and have breakfast delivered. Or enjoy an early dinner on your verandah.

REVEL

in a new world of entertainment

AT THE END OF EACH DAY, evenings on board *Nieuw Statendam* become a celebration of art as dazzling musical performances, entertainment and nightlife let you sing, dance and play the night away.





ENTERTAINMENT DETAILS

Music Walk®

Nieuw Statendam features the complete Music Walk experience, with live music across three stages:

- **B.B. King's Blues Club**

Direct from Beale Street, the B.B. King's All-Star Band brings the best of Memphis music to sea, from funky and fast to soulful and smooth.

- **Lincoln Center Stage**

In an exclusive partnership with the world's leading center for the performing arts, Lincoln Center Stage showcases outstanding live chamber music performances.

- **Billboard Onboard**

Guests are part of the show as live musicians rock the crowd with 50 years of chart-topping hits.

World Stage

A state-of-the-art theater with its two-story, 270-degree wraparound LED screen surrounding you in high-definition, the World Stage is home to unforgettable presentations, including the exclusive "Planet Earth II in Concert" from BBC Earth.

Casino

From popular favorites like slot machines and blackjack tables to the latest in sophisticated gaming, the Casino offers thrilling action for players of all levels.

Movies Poolside

Step out on the Lido Deck to enjoy a movie on the giant LED screen under the stars.

Ocean Bar

Cocktails and ocean views pair perfectly with live string music in this sophisticated setting.

NOTES

A dedicated whisk(e)y bar offering an impressive collection of more than 130 brands from around the world.

Previous spread: Performance on the World Stage
 Clockwise from left: Queen's Lounge; BBC Earth Experiences production on World Stage; Casino; Lincoln Center Stage; Lido Deck



SURROUND

yourself with contemporary elegance

WITH SOPHISTICATED DÉCOR and innovative amenities, suites and staterooms on board *Nieuw Statendam* are a welcoming sanctuary at the end of each eventful day. From the elegant furnishings and fixtures to the splendid ocean views, they feature thoughtful touches and enhancements that provide all the comforts of home – and then some.



SUITE & STATEROOM DETAILS

STYLISH STATEROOMS

- More comfort and convenience with enhancements such as bedside USB ports, frameless shower doors and customized wood cabinets
- Family Ocean-view Staterooms for up to five guests
- Individual staterooms designed for solo travelers

Verandah Stateroom

- Sitting area, private verandah and floor-to-ceiling windows
- Signature Mariner's Dream® bed featuring finely woven cotton linens
- 100% Egyptian-cotton towels
- Flat-panel LCD television with video-on-demand

SOPHISTICATED SUITES

- New furnishings and fixtures throughout
- Floor-to-ceiling windows with expansive ocean views
- Private teak-lined verandah
- One-touch concierge service and priority luggage delivery

Neptune Suite

- Bose® SoundLink® Mini Bluetooth® audio system
- Bathroom with dual-sink vanity
- Full-size whirlpool bath and shower
- Large sitting area for relaxing or entertaining
- Amenities include priority dining reservations, priority disembarkation, and complimentary laundry, pressing and dry cleaning
- Pinnacle and Neptune Suites have access to the private Neptune Lounge



Clockwise from left: Verandah Stateroom; Neptune Suite; Couple enjoying attentive service; Pinnacle Suite; Service with a smile



ENRICH

each moment of your journey

ENGAGING, inspiring or simply relaxing, activities on board *Nieuw Statendam* offer unparalleled experiences designed to make each day more rewarding.



Previous spread: Greenhouse Spa & Salon
 Clockwise from left: America's Test Kitchen; Explorations Central (EXC);
 Fitness Center; The Loft; BLEND by Chateau Ste. Michelle



ACTIVITIES DETAILS

Explorations Central™ (EXC™)

EXC is your home for indispensable travel resources, expert guidance and engagement opportunities that connect you to destinations through authentic, vivid and meaningful experiences.

BLEND by Chateau Ste. Michelle

Wine connoisseurs and novices alike can experience the art of winemaking at BLEND by Chateau Ste. Michelle. Create your own unique blend of wine in this intimate and welcoming venue.

America's Test Kitchen

Choose from an enticing selection of live onboard cooking shows and hands-on workshops where you will learn foolproof techniques and user-friendly recipes to make delectable dishes with confidence.

BBC Earth Experiences

Learn about the ocean and the natural world through amazing concerts, films, shows and children's activities – all featuring exclusive content from BBC Earth.

Digital Workshop powered by Windows

Learn how to edit, display and share your vacation videos and photographs through our Digital Workshop powered by Windows.

Explorations Café presented by *The New York Times*

Relax in a comfortable, coffeehouse environment where you can browse through one of the most extensive libraries at sea, enjoy a wide array of audio and video programming, or simply read the morning paper.

Greenhouse Spa & Salon™

Choose the blissful pampering of a facial or let the trained fingers of a massage therapist soothe your muscles while working fragrant oils into your skin.

Club HAL® and The Loft

Kids ages 3 to 17 can enjoy an array of exciting activities, supervised by a full-time, professionally trained staff.

Fitness

Take a class in our professionally staffed Fitness Center equipped with the latest cardio and weight machines, or head on deck where basketball and volleyball courts and two refreshing pools await.

The Shops of Holland America Line

Enjoy a wide variety of duty-free shopping in the Signature Shops such as Merabella, a luxury jewelry boutique featuring high-end watches and pieces from noted designers.



2018-2019 CARIBBEAN SEASON

SISTER SHIP TO KONINGS DAM, the arrival of *Nieuw Statendam* gives you twice as many opportunities to experience Pinnacle-class cruising with Holland America Line, starting with her Inaugural Season in the Caribbean.

CRUISE	SAILING DATE(S)	ITINERARY
4-Day Bahamas	2018: Dec 19	Ft. Lauderdale , Half Moon Cay, Nassau, Ft. Lauderdale
3-Day Bahamas	2019: Jan 30	Ft. Lauderdale , Half Moon Cay, Ft. Lauderdale
7-Day Eastern Caribbean	2018: Dec 23* 2019: Mar 17	Ft. Lauderdale , Amber Cove, San Juan, St. Thomas, Half Moon Cay, Ft. Lauderdale
7-Day Eastern Caribbean	2019: Feb 17; Mar 3, 31; Apr 14	Ft. Lauderdale , Grand Turk, San Juan, St. Thomas, Half Moon Cay, Ft. Lauderdale
7-Day Eastern Caribbean	2019: Jan 13	Ft. Lauderdale , Nassau, San Juan, St. Thomas, Half Moon Cay, Ft. Lauderdale
7-Day Western Caribbean	2018: Dec 30* 2019: Feb 10, 24; Mar 10, 24; Apr 7	Ft. Lauderdale , Half Moon Cay, Ocho Rios, Grand Cayman, Cozumel, Ft. Lauderdale
7-Day Western Caribbean	2019: Jan 6	Ft. Lauderdale , Half Moon Cay, Montego Bay, Grand Cayman, Cozumel, Ft. Lauderdale
10-Day Southern Caribbean Seafarer®	2019: Jan 20	Ft. Lauderdale , Half Moon Cay, Grand Turk, Amber Cove, Bonaire, Curaçao, Aruba, Ft. Lauderdale

Select sailings can be combined to create a Collectors' Voyage — giving you an in-depth exploration of the Caribbean at an even greater value.

*Celebrate the holidays on these sailings. Itineraries are subject to change.



HALF MOON CAY

DAYS LIKE THIS...

HALF MOON CAY IS YOUR PRIVATE-ISLAND PARADISE.

The Caribbean is full of tropical wonders. But there's nothing like Half Moon Cay, our award-winning private island. Uncrowded and unspoiled, the island is yours to explore, and a wide range of amenities and activities let you create your own experience. Go horseback riding through the surf, explore the island's breathtaking natural beauty or find a secluded spot to spread out and relax. However you define your perfect day, you'll find it here.



2019 EUROPE SEASON

IN 2019, *Nieuw Statendam* will move to Europe, where she'll join *Koningsdam* for the 2019 season. She will homeport in Amsterdam, offering 7- and 14-day voyages to Norway, the Baltic and Iceland, before repositioning to the Mediterranean later in the year. Her arrival in Amsterdam on Sunday, May 5, 2019, will mark her first time calling in her home country of the Netherlands.

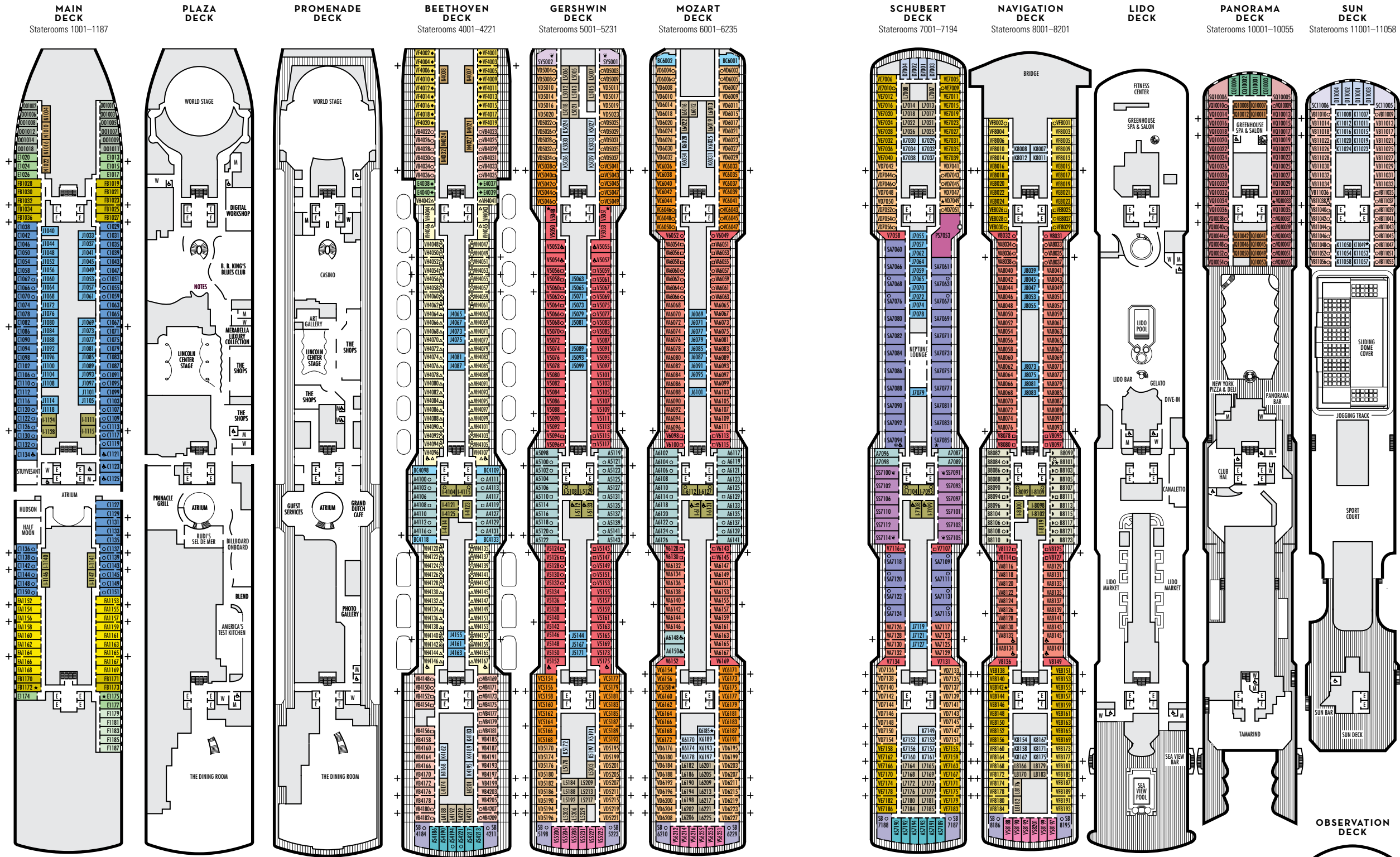


Clockwise from left: Amsterdam, the Netherlands; Sognefjord, Norway; Rome, Italy; Santorini, Greece

CRUISE	SAILING DATE(S)	ITINERARY
14-Day Premiere Voyage	2018: Dec 5	Civitavecchia (Rome) , Cartagena, Málaga (Granada), Funchal, Ft. Lauderdale
14-Day Azores & Normandy Expedition	2019: Apr 21	Ft. Lauderdale , Horta, Ponta Delgada, Cherbourg, Zeebrugge (Brugge/Brussels), Amsterdam
7-Day Viking Sagas	2019: May 5; Jun 2*, 30*; Jul 28*; Aug 18	Amsterdam , Flåm, Scenic cruising Sognefjord, Stavanger, Kristiansand, Scenic cruising Oslofjord, Oslo, Amsterdam
14-Day Jewels of the Baltic	2019: May 12; Aug 25	Amsterdam , Copenhagen, Warnemünde (Berlin), Tallinn, 1-night extended stay in St. Petersburg, Helsinki, Stockholm, Scenic cruising Stockholm Archipelago, Kiel (Hamburg), Aarhus, Amsterdam
7-Day Norse Legends	2019: May 26*; Jun 23; Jul 21; Sep 8*	Amsterdam , Eidfjord, Scenic cruising Hardangerfjord, Skjolden, Scenic cruising Sognefjord, Ålesund, Bergen, Amsterdam
14-Day Voyage of the Midnight Sun	2019: Jun 9; Jul 7*	Amsterdam , Eidfjord, Scenic cruising Hardangerfjord, Bergen, Molde, Trondheim, Honningsvåg, Scenic cruising North Cape, Skjolden, Scenic cruising Sognefjord, Stavanger, Kristiansand, Amsterdam
14-Day Northern Isles	2019: Aug 4	Amsterdam , Newcastle upon Tyne, South Queensferry (Edinburgh), 1-night extended stay in Reykjavík, Ísafjörður, Scenic cruising Ísafjarðardjúp, Akureyri, Scenic cruising Eyjafjörður, Ålesund, Bergen, Amsterdam
12-Day Iberian Adventure	2019: Sep 15	Amsterdam , Cobh (Cork), Vigo, Lisbon, 1-night extended stay in Cádiz (Seville), Gibraltar, Málaga (Granada), Cartagena, Civitavecchia (Rome)
10-Day Mediterranean Mosaic	2019: Sep 27; Oct 17	Civitavecchia (Rome) , Dubrovnik, Kotor, Corfu, Katákolon (Olympia), Piraeus (Athens), Santoríni, Naples, Civitavecchia (Rome)
10-Day Mediterranean Dream	2019: Oct 7	Civitavecchia (Rome) , Cartagena, Gibraltar, Cádiz (Seville), Barcelona, Marseille (Provence), Monte Carlo, Livorno (Florence/Pisa), Civitavecchia (Rome)
14-Day Passage to America	2019: Oct 27	Civitavecchia (Rome) , Cartagena, Málaga (Granada), Cádiz (Seville), Ponta Delgada, Ft. Lauderdale

Itineraries are subject to change.
* Itineraries vary.

Select sailings can be combined to create a Collectors' Voyage — giving you an in-depth exploration of Europe at an even greater value.



NIEUW STATENDAM

DECK PLANS & STATEROOMS

The deck plans are color-coded by category of stateroom, and the category letter precedes the stateroom number in each room. All staterooms are equipped with interactive LED television with On Demand movies, programming and multichannel music; mini-bar; mini-safe; data port; telephone.

Important Note: Not all staterooms within each category have the same furniture configuration and/or facilities. Appropriate symbols within the rooms on the deck plans describe differences from the stateroom descriptions below.

- VERANDAH SUITES**
- PS**
Pinnacle Suite: Bedroom with 1 king-size bed, oversize whirlpool bath & shower & additional shower stall, living room, dining room, dressing room, private verandah with whirlpool, pantry, 1 sofa bed for 2 persons, microwave, refrigerator, guest toilet, private stereo system, floor-to-ceiling windows.
 - SS** **SV**
Signature Suites: 2 lower beds convertible to 1 king-size bed, bathroom with dual-sink vanity, full-size whirlpool bath & shower & additional shower stall, large sitting area, private verandah, floor-to-ceiling windows.
 - AS** **A** **B** **BC**
Vista Suites: 2 lower beds convertible to 1 queen-size bed, shower, sitting area, private verandah, refrigerator, floor-to-ceiling windows.
- VERANDAH STATEROOMS**
- VQ*** **VS** **V** **VA** **VB**
Verandah: 2 lower beds convertible to 1 queen-size bed, shower, sitting area, private verandah, floor-to-ceiling windows. All VH-category staterooms have partially obstructed views.
 - OCEAN-VIEW STATEROOMS**
 - FA** **FB**
Family: 2 lower beds convertible to 1 queen-size bed, 1 sofa bed for 2 persons & 1 upper bed. 2 bathrooms — one with bathtub, shower, sink & toilet; one with shower & sink.
 - CQ*** **C** **D** **E** **F**
Large: 2 lower beds convertible to 1 queen-size bed, shower.
 - OO**
Single: 1 lower bed, shower.
- INTERIOR STATEROOMS**
- IQ*** **I** **J** **K** **L**
Large or Standard: 2 lower beds convertible to 1 queen-size bed, shower.
 - N**
Spa Suites and Staterooms. Opt for the serenity of a Spa Suite or Stateroom, featuring modern spa amenities.

- STATEROOM SYMBOL LEGEND**
- Quad (2 lower beds, 1 sofa bed, 1 upper)
 - ⊙ Triple (2 lower beds, 1 upper)
 - Triple (2 lower beds, 1 sofa bed)
 - ⊕ Double (2 lower beds convertible to 1 king-size bed, no Murphy bed)
 - △ Partially obstructed view
 - + Connecting rooms
 - ✦ Floor-to-ceiling windows
 - ✦ Shower only
 - ▶ Uncovered verandah
 - ◆ Staterooms have solid steel verandah railings instead of clear-view Plexiglas® railings

- ACCESSIBILITY STATEROOM SYMBOL LEGEND**
- ♿ Suites SA7094, A6150 & A6148, and staterooms VA8147, VA8145, VA8134, VA8132, I-7108, I-7099, I-6131, I-6116, V5175, V5152, I-5133, I-5112, V5057, V5055, V5054, V5052, VH4167, VH4146, VH4107, VH4096, C1134, C1125, C1123, C1121 are fully accessible, roll-in shower only
 - ★ Suites B8101 & SA7085 and staterooms K11049, VB11038, VQ10033, VE8142, VD7049, K6185, VC6158, V5051, V5048, FB1172 & E1175 are ambulatory accessible, shower only with small step, step into bathroom, standard interior and exterior door size

- SHIP SPECIFICATIONS & FACILITIES**
- 2,666 Guests
 - 1,036 Crew
 - 99,500 Gross Tons
 - 975 Feet Long
 - 13 Guest Decks
 - Wraparound Promenade Deck
 - 12 Restaurants & Cafes
 - 7 Entertainment Venues
 - 7 Lounges/Bars
 - 2 Outdoor Swimming Pools (one with sliding glass roof)
 - Spa & Salon
 - Fitness Center
 - Suite Lounge
 - Duty-free Shops
 - Library/Internet Cafe
 - Onboard Wi-Fi Access
 - Casino
 - Sport Courts

